



Reactor[®] Spray Foam and Polyurea Equipment

For fast-set plural-component applications



PROVEN QUALITY. LEADING TECHNOLOGY.

▶ Graco Has You Covered

No matter what the application, Graco has the solution

Whether you're spraying foam or applying polyurea coatings, Graco Reactor® Plural-Component Systems help you get the job done with superior results. Available in air, electric or hydraulic technology – we have the right equipment to meet your needs.

Which system is right for you?

Technology types: A = air; E = electric; H = hydraulic



Portable and Touch-up Systems

SPRAY FOAM APPLICATIONS	COATINGS APPLICATIONS
E-8p E-10	E-10hp



Entry-level Systems

SPRAY FOAM APPLICATIONS	COATINGS APPLICATIONS
A-25 E-20	A-XP1 E-10hp E-XP1



Mid-production Systems

SPRAY FOAM APPLICATIONS	COATINGS APPLICATIONS
E-30 H-30	E-XP2 H-XP2



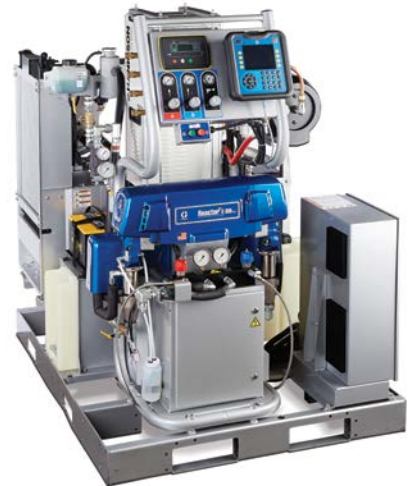
High-production Systems

SPRAY FOAM APPLICATIONS	COATINGS APPLICATIONS
H-40 H-50	H-XP3

Three-Year Extended Warranty

We stand behind every piece of equipment we manufacture with one of the industry's strongest warranties. Spray with the confidence that you will probably never need to use Graco's warranty, but if you do – Graco Has You Covered.

Reactor 2 systems offer a three-year extended warranty on control modules, display module and electric motor (E-series only). See product manual for specific warranty details.



Turnkey Systems

SPRAY FOAM APPLICATIONS

COATINGS APPLICATIONS

E-30i

E-XP2i

► Understand Spray Performance

Performance charts with mix chamber choices

Use these charts to help identify the system that will work most efficiently with each mix chamber. Flow rates are based on a material viscosity of 60 cps. *See examples to the right*†.

How to use these charts

- Select spray pressure
- Select mix chamber or flow rate
- Choose equipment model

Note: Darker shading includes equipment models shown in lighter shaded areas.

Spray Foam Example

Mix chamber: AR6060 (03)

Pressure: 1250 psi

Flow rate: 22 lb/min*

Reactors H-30, E-30, H-40, H-50

Coatings Example

Mix chamber: AR2929 (00)

Pressure: 1500 psi

Flow rate: 0.9 gpm*

Reactors E-XP1, E-XP2, H-XP2, H-XP3, E-10hp (230V)

**Output of flat tip will be slightly less than round equivalent*

Applications

Spray Foam

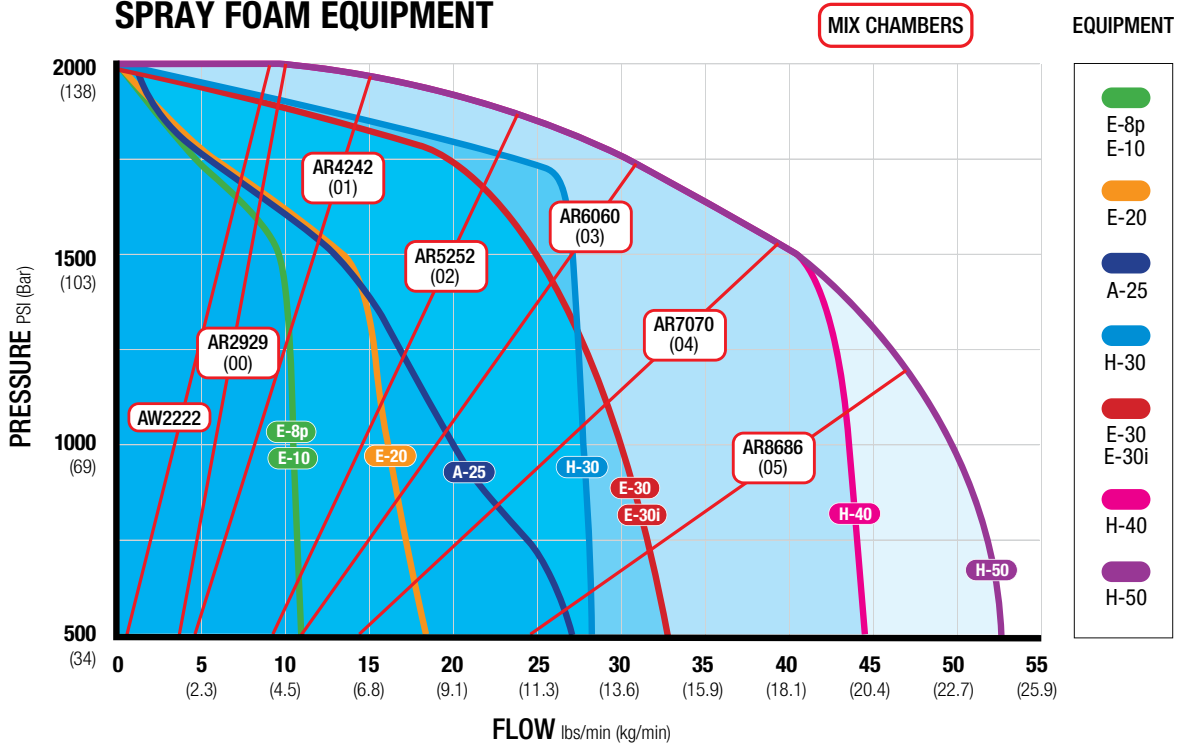
- Aerospace
- Residential & commercial wall insulation
- Rim and band joist
- Concrete lifting
- Roof insulation

Protective Coatings

- Adhesive and caulking for flooring
- Decorative coatings
- Marine and shipbuilding
- Tank and pipe coating
- Wastewater treatment
- Foundations
- Potable water
- Truck bedliners
- Waterproofing

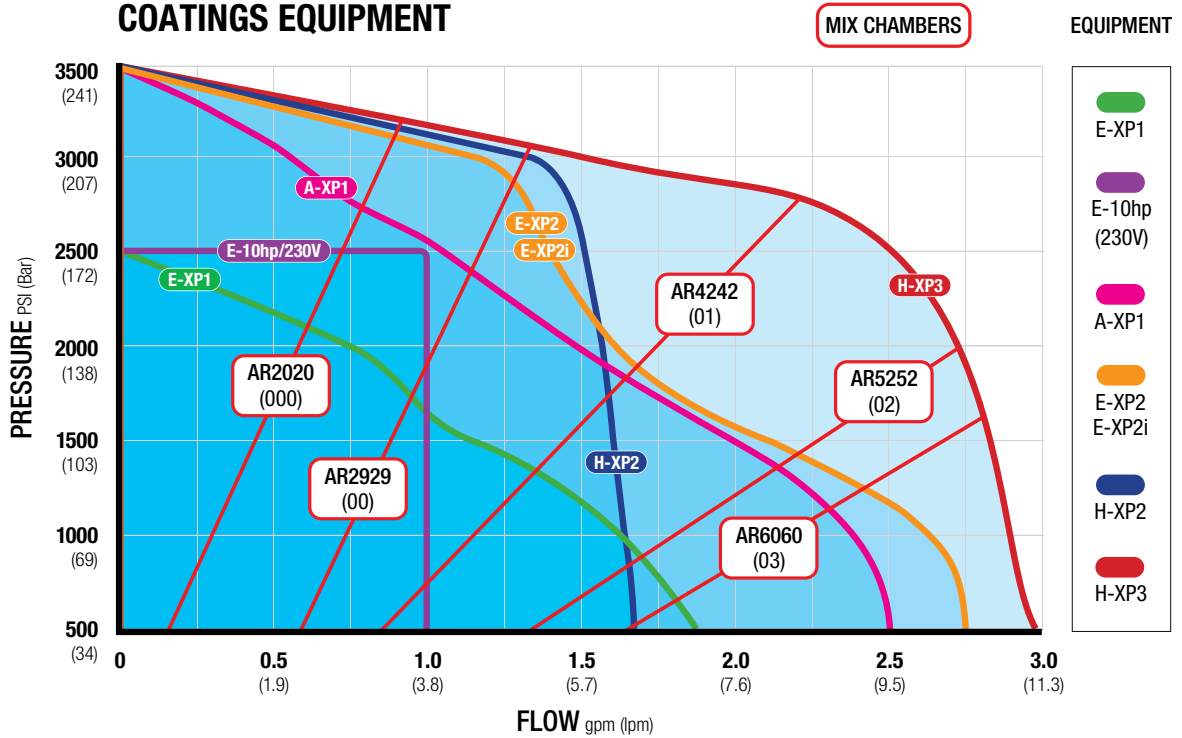


SPRAY FOAM EQUIPMENT



[†]Electric unit performance curves are based on typical spraying conditions. Periods of continuous spraying or very high ambient temperatures reduce the performance envelop. Hydraulic system performance curves allow for continuous spray conditions.

COATINGS EQUIPMENT



[†]Electric unit performance curves are based on typical spraying conditions. Periods of continuous spraying or very high ambient temperatures reduce the performance envelop. Hydraulic system performance curves allow for continuous spray conditions.

► Advancing the Industry

Like you, we want customers to be completely satisfied with their spray foam and coatings application investment. Graco's goal is to provide equipment advancements that help you and your crews apply materials more accurately and more efficiently – as the material suppliers intended, to help grow your business.

Better control



Advanced control technology

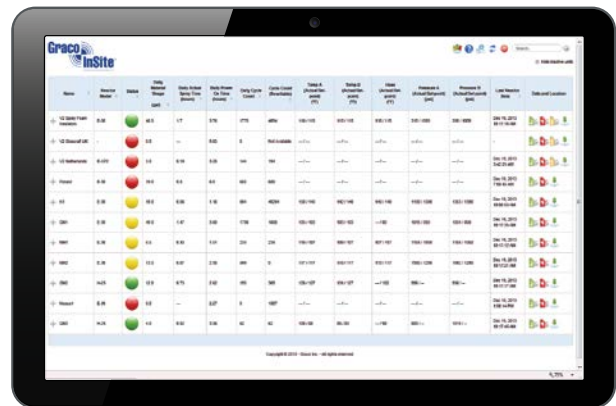
Advanced Display Module (ADM) is the standard interface for all Reactor 2 systems. With the ability to track, monitor and save project information, the ADM also has the ability to download data onto a USB drive for further analysis.

Screen shown:

Drum fluid levels – easy indication when you are running low on chemical. One of many screens available on the ADM.

Graco InSite™ Remote Reporting Technology

The power to control your business – wherever you are. The information Graco InSite gathers can save you money, help you bid jobs more accurately and troubleshoot problems more quickly, saving lost overhead and revenue. The data it collects is stored and available anywhere you can access the Internet. For full Graco InSite details and to navigate a demo, visit gracoinsite.com! Graco InSite is standard on Reactor 2 Elite models.



Better spray performance

11/11/13 12:15		System		Recipes		Advanced	
E-30 Active		No Active Errors					
	A	B	Q	⊙			
	°F	°F	°F	psi	Enabled		
RECIPE A	32	32	32	0	<input type="checkbox"/>	<input type="checkbox"/>	3
RECIPE B	32	32	32	0	<input type="checkbox"/>	<input type="checkbox"/>	1
RECIPE C	32	32	32	0	<input type="checkbox"/>	<input type="checkbox"/>	2
RECIPE D	32	32	32	0	<input type="checkbox"/>	<input type="checkbox"/>	
RECIPE E	32	32	32	0	<input type="checkbox"/>	<input type="checkbox"/>	
RECIPE F	32	32	32	0	<input type="checkbox"/>	<input type="checkbox"/>	
RECIPE G	32	32	32	0	<input type="checkbox"/>	<input type="checkbox"/>	
RECIPE H	32	32	32	0	<input type="checkbox"/>	<input type="checkbox"/>	

Precise material application

The ADM lets you store up to 24 material recipes, so switching material spray parameters is fast, easy and trouble-free. By reducing human error in entering set points you're more likely to spray material as the material supplier intended.



Easier to service

Try it now!



Reduce your downtime with QR codes

Error codes appear on your ADM with a helpful QR code. The QR codes explain the problem and provide solutions by simply scanning the code with your smart phone or device. The scan takes you directly to help.graco.com that provides up-to-date advanced trouble shooting information.

Peace of mind

Advanced electronics

Graco designed the electronics in the Reactor 2 systems to a stringent electronics reliability standard. These modules are more robust and able to withstand a wider range of power spikes or surges.



Sacrificial Surge Protector for added protection

As an added level of protection, Graco also added a sacrificial surge protector to Reactor 2 systems. If there is an excessive power spike, you only have to replace this smaller, less expensive part – not the entire control module. All Reactor 2 models include a spare sacrificial surge protector to get you back up and running immediately.



► Turnkey Systems

What a turnkey system can do for you:

- **Save time** – it's easy to install into a spray rig since it's pre-wired with components already selected and installed
- **Save diesel fuel costs** – an average of \$7,000 annually*
- **Eliminate costly power issues** – associated with shore power and low cost generators
- **Improved heating capacity** – adjust temperatures quickly to minimize downtime during recirc
- **Reduce fuel costs even more** – compact, portable design fits into a smaller trailer; smaller trailer means a smaller truck [4 ft (1.2 m) wide by 5 ft (1.5 m deep)]

Reactor 2 E-30i and E-XP2i

Ready for the job site or spray rig – right out of the box

A complete integrated system combines an electric Reactor system, diesel generator, air compressor and air dryer into one package. This patent-pending design provides constant, steady temperature control for superior heating performance without wasting energy. Waste heat from the generator is repurposed to heat the material allowing for a smaller generator.

Graco InSite - Remote Reporting Technology

- Standard on all integrated systems

Integrated Air Compressor

Standard on some models

- Tankless
- Hydrovane rotary vane compressor

Distribution Panel

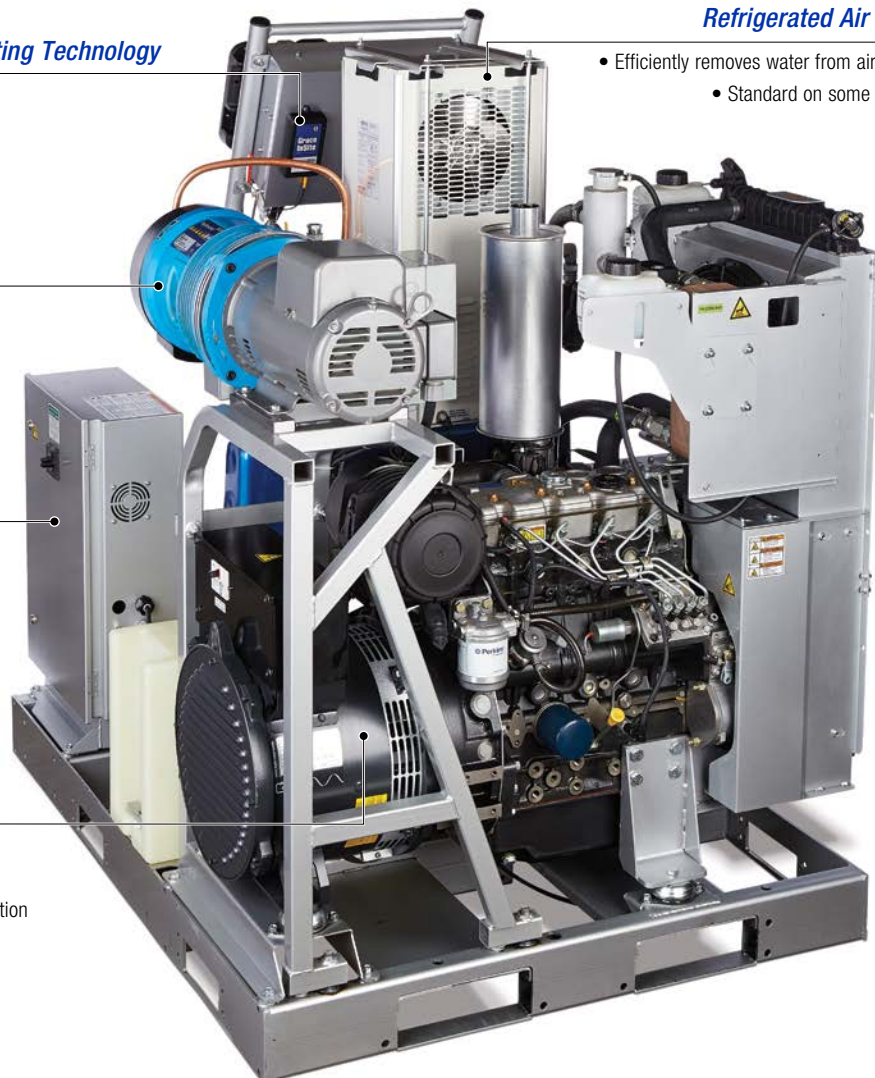
- Easy to service electrical controls and breakers
- Pre-wired auxiliary breakers provided for compressor and other auxiliary equipment

Gen Set

- 29 HP Perkins engine
- 22 kW Mecc Alte alternator
- Smaller engine reduces fuel consumption

Refrigerated Air Dryer

- Efficiently removes water from air supply
- Standard on some models



Integrated Air Control Panel

- Controls A and B feed pumps, agitator and gun
- One air line connection means less plumbing, less hoses and less assembly time

Gen Set Controls

- Integrated controls allow for convenient and easy start up
- Engine monitoring functionality

Heat Recovery System

- Recovers heat from the engine coolant and transfers it to the A and B materials

Advanced Controls

- Easy to operate Advanced Display Module interface
- Graco InSite – Remote Reporting Technology comes standard

Easy Troubleshooting Diagnosis

- Troubleshooting Y-strainers for analog temperature and pressure gauges
- Inlet pressures and temperatures sensors are displayed and recorded on ADM and Graco InSite

Booster Heat

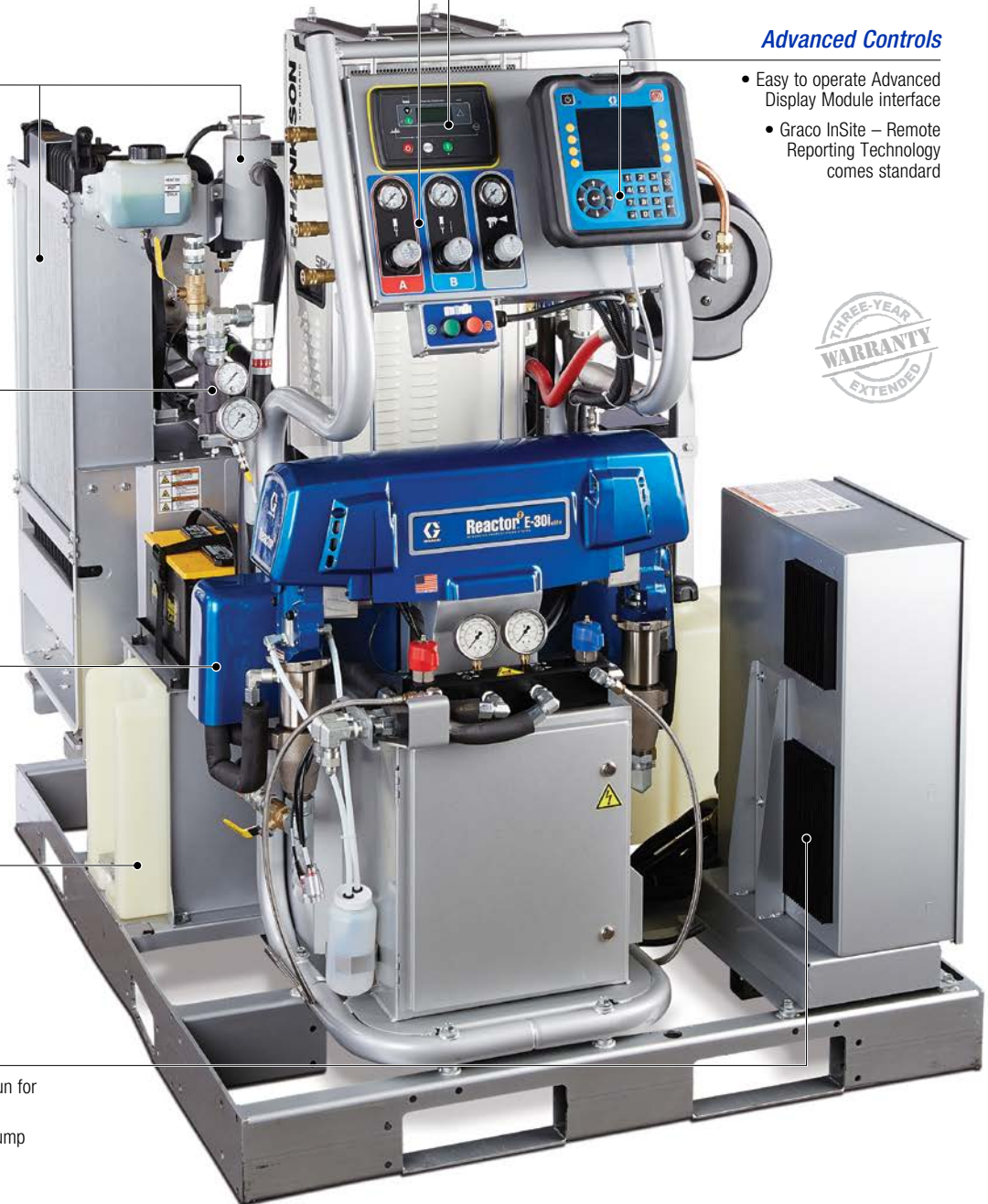
- 4000 watt heater (included on high-heat systems only)

Fuel Tank

- 22-gal (83 liter) capacity
- Can be remote mounted

Motor Control

- Consistent pressure at the gun for improved spray performance
- Low-pulse design reduces pump change-over fluctuation



Calculate your savings at www.graco.com/integrated

*By replacing a standard 40 kw generator with a 22 kw generator, the system's fuel needs are greatly reduced. Savings are an estimate only. Actual savings may vary.

► Mid-production Systems

What an electric system can do for you:

- **Increase productivity** – plenty of power for most residential and commercial applications
- **Smooth and consistent spray pattern** – minimizes pressure fluctuations on pump changeover
- **Free up space in trailer or rig** – smaller footprint when compared to other spray systems



Reactor 2 Electric Series

Proven reliability at an outstanding value

With proven reliability the Reactor 2 E-series is the industry's preferred system. Reactor 2 stand-alone models are available in an E-30 and E-XP2 model.

Advanced Controls

- Easy to operate Advanced Display Module interface
- Graco InSite – Remote Reporting Technology*

Ergonomic Set-up

- Electronics are above the pumps – comfortable working height for easier service

Brushless Electric Motor

- Improved control and performance
- No maintenance needed
- Longer life

Easy Troubleshooting Diagnosis

- Troubleshooting Y-strainer for analog temperature and pressure gauges
- Inlet pressures and temperatures sensor are displayed and recorded on ADM and Graco InSite*

Sleek Design

- 40% smaller footprint than traditional Reactor E-30

*Elite Models

- Graco InSite comes factory installed
- Inlet pressure and temperature sensors (interfaces with Graco InSite)
- Xtreme-Wrap™ Scuff Guard on heated hoses when ordered as a package

GLOBAL FIELD-TESTING

MORE THAN
30,000 GALLONS SPRAYED

LIFE TESTING

EIGHT REACTOR 2's RAN CONTINUOUSLY;
EACH RAN OVER THREE MILLION CYCLES

LAB TESTING

OVER 150 UNIQUE TESTS PERFORMED
IN THE GRACO TEST LABS

► Entry-level Systems

What an entry-level system can do for you:

- **Easy to maneuver** – wheeled carts let you get closer to the job
- **Easy to use** – best for low to medium-output applications
- **Affordability** – excellent value for residential and commercial use

Reactor A-25 and A-XP1

Best choice for affordability

The Reactor air systems have the ability to maintain consistent temperature control, even when you're spraying at maximum flow rates – resulting in better quality foam or coatings. Have peace of mind with the proven durability of a standard Graco quality air motor.

Three Heat Zones

- Three independent heat zones – ISO, resin and hose heat
- Provide accurate heat control for reliable spraying to handle different chemical viscosities
- Digital temperature controls

Recirculation Manifold

- A quick, easy way to balance system pressures

Hybrid Heater

- Provides better temperature control

DataTrak™ Control

- Resettable counter tracks material usage

NXT® Air Motor

- Low air consumption for increased efficiency
- Muffler provides low operating noise levels
- Air valve provides smooth and rapid changeover

ISO Pump Lube System

- Prevents isocyanate crystallization on the pump seal and shaft

Quick Knockdown Pumps

- Allows for easy service
- Fast disassembly



Reactor E-20 and E-XP1

Durability you've come to expect

Equipped with material data and system diagnostics, the Reactor E-20 and E-XP1 systems provide total control for spraying foam insulation and coatings.

Reliability

- Powerful hybrid heaters
- Accurate heating with precise temperature sensing

Simple Control

- Digital heat and pressure controls

Heater Control Boards

- Longer-lasting modular heater
- Minimize downtime

Hose Heat Transformer

- Does not require tap settings

Pumps

- Quick knockdown for easy maintenance



► Portable & Touch-up Systems

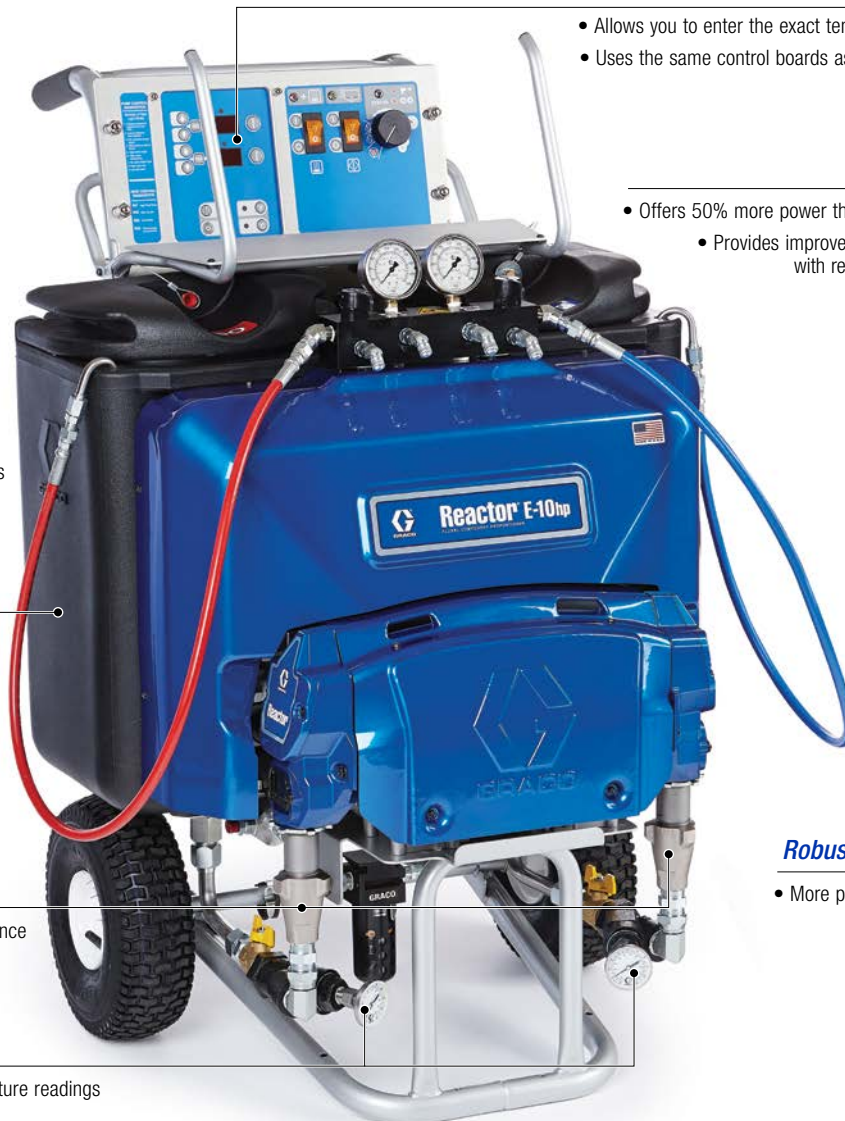
What portable & touch-up systems can do for you:

- **Save time** – get smaller jobs done fast without sacrificing performance
- **Self-contained system** – no transfer pumps required
- **Easy to use** – single knob motor operations
- **Provides consistency** – uses standard spray guns you're familiar with

Reactor E-10hp

Fast start-up time for improved productivity

Expand your business with polyurea applications. The Reactor E-10hp sprayer is a smart, affordable investment that will help grow your business. Even though it's an entry level system, it packs plenty of power and uses standard residential electrical outlets – no generator is needed.



Digital Heat Controls

- Allows you to enter the exact temperatures you need
- Uses the same control boards as a standard Reactor

Low Level Sensors

- Indicates when material is low (1 gal/3.8 L remaining)
- No contact with materials – prevents buildup

Boost Heat

- Directs unused power from the motor circuit to additional heater rods
- Additional heater power brings material to desired temperatures faster during recirculation mode

Insulated Tanks

- Double-wall insulated to retain heat
- Smooth interior lining for easy cleaning
- Improved seal design on lid for better moisture control

Quick knockdown Lower Pumps

- Easy disassembly and maintenance

Temperature Gauges in Y-strainers

- Provides accurate tank temperature readings

Motor

- Offers 50% more power than the Reactor E-10
- Provides improved spray performance with reduced pressure drop

Robust Hybrid Heater

- More power, faster material handling means more uptime

Reactor E-10

Save up to 30% on material costs compared to disposable foam systems

Reactor E-10 sprayers are ideal for plural-component spray, joint-fill jobs and touch-ups. One person operation saves time and money!

Intuitive Controls

- Easy start and stop
- Digital temperature display

Heater and Hose

- Gives up to 2000 watts to pre-heat circulating material

Electric Motor

- Improved performance
- Reduces operating costs

Power

- Electric power is a low draw and plugs into standard outlets



Reactor E-8p

For no-heat foams and flooring applications

Become more competitive in today's market with equipment designed for remodeling or flooring applications. As a touch-up system for no-heat foam insulation, the Reactor E-8p system frees up larger rigs for larger jobs while enabling you to finish small jobs affordably. For flooring applications, the Reactor E-8p system offers easy control and is ideal for small to mid-sized joint fill applications.

Electric Motor

- Proven motor performance, uses standard residential outlet

Telescoping Handle

- Easy handling from your vehicle to the home

Built-in Suction Lines

- No need for feed pumps

Lightweight

- Easy to maneuver up and down stairs – only 95 lb (43 kg)

Threaded Bucket Spout Connection

- Keeps your connection secure and prevents spills

Pressure Balance Valves

- Quick and easy balancing of system pressures enables correct start-up

Simple User Controls

- Intuitive start/stop with single control knob



Equipment For Spray Foam Applications

► Graco Has You Covered



	Air (A Series)		Electric (E Series)		
MODEL	A-25	E-8p	E-10	E-20	Reactor 2 E-30
Max Working Pressure	2000 psi (138 bar, 13.8 MPa) 28 scfm air consumption@100 psi	2000 psi (140 bar, 14 MPa)	2000 psi (138 bar, 13.8 MPa)	2000 psi (138 bar, 13.8 MPa)	2000 psi (138 bar, 13.8 MPa)
Min Working Pressure	N/A	NA	N/A	N/A	N/A
Max Hose Length	210 ft (64 m)	105 ft (32 m)	105 ft (32 m)	210 ft (64 m)	310 ft (94 m)
Max Fluid Temp	190°F (88°C)	NA	160°F (71°C)	190°F (88°C)	190°F (88°C)
Output	25 lb (11.4 kg)/min	12 lb (5.4 kg)/min	12 lb (5.4 kg)/min	20 lb (9 kg)/min	30 lb (13.6 kg)/min
Weight	250 lb (113 kg)	95 lb (43 kg)	Heated: 160 lb (72 kg) Unheated: 150 lb (68 kg)	342 lb (155 kg)	355 lb (161 kg)
Graco InSite Compatible	No	No	No	Yes	Yes
Ordering Information	With 6.0 kW heater: 262614 *Amps 230V, 1-ph — 40A 230V, 3-ph — 32A 380V, 3-ph — 18.5A	Foam: 120V 259082 240V 259083 Flooring: 120V 259082 24R151 (Pkg) 240V 259083 24R154 (Pkg)	With 1.7 kW heater: 120V, 2-cord 249570 With 2.0 kW heater: 240V, 2-cord 249571 240V, 1-cord 249572 Unheated ambient system: 120V 249576 240V 249577	With 6.0 kW heater: 230V, 1-ph — 48A 259025 230V, 3-ph — 32A 259034 400V, 3-ph — 24A 259030	With 10.2 kW heater: 272110 - Elite 272010 - standard With 15.3 kW heater: 272111 - Elite 272011 - standard *Amps 10kW: 230V, 1-ph — 78A 230V, 3-ph — 50A 400V, 3-ph — 34A 15kW: 230V, 1-ph — 100A 230V, 3-ph — 62A 400V, 3-ph — 35A
Packages	‡		‡	‡	‡ Δ
Operation manual	3A1569	3A1602	311075	312065	333023
Repair manual	3A1570	3A1602	311075	312066	333024

*Reactor systems can be wired for all voltages: 230V - 1ph; 230V - 3ph; 400V - 3ph

‡ Basic packages available

Δ Additional hose packages available

Basic packages

Most Reactor systems are available in a basic package, which includes:

- System
- Whip hose
- Spray hose
- Choice of gun Fusion® AP, CS or Probler® P2

To order this package, replace the first two part numbers with the gun type. Fusion AP = AP; Fusion CS = CS; Probler P2 = P2

For example: System 272110 in a basic package with a Fusion AP gun, becomes part number AP2110



Electric (E Series)	Hydraulic (H Series)		
Reactor 2 E-30i	Reactor 2 H-30	Reactor 2 H-40	Reactor 2 H-50
2000 psi (138 bar, 13.8 MPa)	2000 psi (138 bar, 13.8 MPa)	2000 psi (138 bar, 13.8 MPa)	2000 psi (138 bar, 13.8 MPa)
N/A	700 psi (48 bar, 4.8 MPa)	600 psi (41 bar, 4.1 MPa)	600 psi (41 bar, 4.1 MPa)
310 ft (94 m)	310 ft (94 m)	410 ft (125 m)	410 ft (125 m)
190°F (88°C)	190°F (88°C)	190°F (88°C)	190°F (88°C)
30 lb (13.6 kg)/min	28 lb (12.3 kg)/min	45 lb (20 kg)/min	52 lb (23.6 kg)/min
1750 lb (793.7 kg) - without compressor 2200 lb (998 kg) - with compressor	10 kW: 530 lb (240 kg) 15 kW: 556 lb (252 kg)	600 lb (272 kg)	600 lb (272 kg)
Yes	Yes	Yes	Yes
120V or 240V, 1-ph Without Compressor: 272079 Aux. power available: 52A at 240V 272080 (Booster Heat) Aux. power available: 35A at 240V With Compressor: 272089 Aux. power available: 22A at 240V 272090 (Booster Heat) Aux. power available: 5A at 240V Other Specs: Compressor: Hydrovane 5 HP, 16cfm, 240V, 1-ph, 60 Hz Air Dryer: Hankison, refrigerated 22 scfm, 115V, 1-ph, 60 Hz Engine: Perkins 404-22G, 2.2 L, 29 HP Generator: Mecc Alte 22 kW, 240V, 1-ph, 60 Hz, pancake style	With 10.2 kW heater: 17H131 - Elite 17H031 - standard With 15.3 kW heater: 17H132 - Elite 17H032 - standard *Amps 10kW: 230V, 1-ph — 79A 230V, 3-ph — 46A 400V, 3-ph — 35A 15kW: 230V, 1-ph — 100A 230V, 3-ph — 59A 400V, 3-ph — 35A	With 15.3 kW heater: 230V, 3-ph — 71A 17H143 - Elite 17H043 - standard 400V, 3-ph — 41A 17H145 - Elite 17H045 - standard With 20.4 kW heater: 230V, 3-ph — 95A 17H144 - Elite 17H044 - standard 400V, 3-ph — 52A 17H146 - Elite 17H046 - standard	With 20.4 kW heater: 230V, 3-ph — 95A 17H153 - Elite 17H053 - standard 400V, 3-ph — 52A 17H156 - Elite 17H056 - standard
‡	‡ Δ	‡ Δ	‡ Δ
332636	334945	334945	334945
332637	334946	334946	334946

*Reactor systems can be wired for all voltages: 230V - 1ph; 230V - 3ph; 400V - 3ph

‡ Basic packages available

Δ Additional hose packages available

Additional hose packages

Most Reactor systems are available in an additional hose package, which includes:

- System
- Whip hose
- Multiple spray hoses
- Choice of gun Fusion® AP, CS or Probler® P2

To order this package, replace the first number with the gun type and the second number with "H" (for hose). Fusion AP = AH; Fusion CS = CH; Probler P2 = PH

For example: System 272110 in an additional hose package with a Fusion AP gun, becomes part number AH2110

Equipment For Coatings Applications

► Graco Has You Covered



	Air (A Series)		Electric (E Series)		
MODEL	A-XP1	E-10hp	E-XP1	Reactor 2 E-XP2	Reactor 2 E-XP2i
Max Working Pressure	3500 psi (240 bar, 24.0 MPa)	2500 psi (172 bar, 17.2 MPa)	2500 psi (172 bar, 17.2 MPa)	3500 psi (240 bar, 24.0 MPa)	3500 psi (240 bar, 24.0 MPa)
Min Working Pressure	N/A	N/A	N/A	N/A	N/A
Max Hose Length	210 ft (64 m)	105 ft (32 m)	210 ft (64 m)	310 ft (94 m)	310 ft (94 m)
Max Fluid Temp	170°F (77°C)	170°F (77°C)	190°F (88°C)	190°F (88°C)	190°F (88°C)
Output	1.5 gal (5.7 L) / min	1 gal (3.8 L) / min	1 gal (3.8 L) / min	2 gal (7.6 L) / min	2 gal (7.6 L) / min
Weight	250 lb (114 kg)	239 lb (108 kg)	342 lb (155 kg)	350 lb (159 kg)	1800 lb (816.4 kg) - w/o compressor 2200 lb (998 kg) - w compressor
Graco InSite Compatible	No	No	Yes	Yes	Yes
Ordering Information	24Y165 230V, 1-ph — 56A 230V, 3-ph — 46A 380V, 3-ph — 26A	120V 24T100 230V 24T900	With 10.2 kW heater: 230V, 1-ph — 69A 259024 230V, 3-ph — 43A 259033 400V, 3-ph — 24A 259029	With 15.3 kW heater: 272112 - Elite 272012 - standard *Amps 230V, 1-ph — 100A 230V, 3-ph — 59A 400V, 3-ph — 35A	120V or 240V, 1-ph Without Compressor: 272081 Aux. power available: 35A at 240V With Compressor: 272091 Aux. power available: 5A at 240V Other Specs: Compressor: Hydrovane 5 HP, 16cfm, 240V, 1-ph, 60 Hz Air Dryer: Hankison, refrigerated 22 scfm, 115V, 1-ph, 60 Hz Engine: Perkins 404-22G, 2.2 L, 29 HP Generator: Mecc Alte 22 kW, 240V, 1-ph, 60 Hz, pancake style
Packages	‡	‡	‡	‡ Δ	‡
Operation manual	3A1569	332144	312065	333023	332636
Repair manual	3A1570	332144	312066	333024	332637

*Reactor systems can be wired for all voltages: 230V - 1ph; 230V - 3ph; 400V - 3ph

‡ Basic packages available

Δ Additional hose packages available

Basic packages

Most Reactor systems are available in a basic package, which includes:

- System
- Whip hose
- Spray hose
- Choice of gun Fusion® AP or Probler® P2

To order this package, replace the first two part numbers with the gun type. Fusion AP = AP; Probler P2 = P2

For example: System 272112 in a basic package with a Fusion AP gun, becomes part number AP2112

Additional hose packages

Most Reactor systems are available in an additional hose package, which includes:

- System
- Whip hose
- Multiple spray hoses
- Choice of gun Fusion® AP or Probler® P2

To order this package, replace the first number with the gun type and the second number with "H" (for hose). Fusion AP = AH; Probler P2 = PH

For example: System 272112 in an additional hose package with a Fusion AP gun, becomes part number AH2112

Build a complete system!



Hydraulic (H Series)	
Reactor 2 H-XP2	Reactor 2 H-XP3
3500 psi (240 bar, 24.0 MPa)	3500 psi (240 bar, 24.0 MPa)
1200 psi (83 bar, 8.3 MPa)	850 psi (59 bar, 5.9 MPa)
310 ft (94 m)	410 ft (125 m)
190°F (88°C)	190°F (88°C)
1.5 gal (5.7 L) / min	2.8 gal (10.6 L) / min
556 lb (252 kg)	600 lb (272 kg)
Yes	Yes
With 15.3 kW heater: 17H162 - Elite 17H062 - standard *Amps 230V, 1-ph — 100A 230V, 3-ph — 59A 400V, 3-ph — 35A	With 20.4 kW heater: 230V, 3-ph — 95A 17H174 - Elite 17H074 - standard 400V, 3-ph — 52A 17H176 - Elite 17H076 - standard
‡ Δ	‡ Δ
334945	334945
334946	334946

1 SELECT A SYSTEM

Choose an air, electric or hydraulic model.

KEY FEATURES:

- Optional data reporting capabilities
- Foam models rated at 2000 psi (138 bar, 13.8 MPa)
- Coatings models rated up to 3500 psi (240 bar, 24.0 MPa)

2 SELECT HEATED HOSES

Choose from pressure ratings of 2000 psi or 3500 psi (138 to 240 bar, 13.8 to 24.0 MPa).

Choose 3/8 in or 1/2 in ID.

3 SELECT HEATED WHIP HOSE

Choose from pressure ratings of 2000 psi or 3500 psi (138 to 240 bar, 13.8 to 24.0 MPa).

Choose 1/4 in or 3/8 in ID.

4 SELECT A GUN

Choose an air-purge, mechanical-purge or liquid-purge gun with a round or flat pattern.

SELECT SUPPLY PROCESSING EQUIPMENT

5 SUPPLY PUMP

Choose from diaphragm or piston pumps for standard materials in drum-mount or wall-mount. Select a 2:1 piston pump for materials with higher viscosities.

6 AGITATOR KITS

Choose a kit to agitate your resin for a consistent coating. Graco's patented Twistork® agitators are very low shear to minimize material frothing.

For details on hoses, guns and accessories, see brochure 349104.



AMERICAS

MINNESOTA

Worldwide Headquarters
Graco Inc.
88 -11th Avenue N.E.
Minneapolis, MN 55413

MAILING ADDRESS

P.O. Box 1441
Minneapolis, MN 55440-1441
Tel: 612-623-6000 Fax: 612-623-6777

EUROPE

BELGIUM

Graco BVBA
Industrieterrein-Oude Bunders
Slakweidestraat 31
B-3630 Maasmechelen,
Belgium
Tel: 32 89 770 700 Fax: 32 89 770 777

ASIA PACIFIC

AUSTRALIA

Graco Australia Pty Ltd.
Suite 17, 2 Enterprise Drive
Bundoora, Victoria 3083
Australia
Tel: 61 3 9468 8500 Fax: 61 3 9468 8599

CHINA

Graco Hong Kong Ltd.
Shanghai Representative Office
Building 7
1029 Zhongshan Road South,
Huangpu District
Shanghai, 200011
The People's Republic of China
Tel: 86 21 649 50088 Fax: 86 21 649 50077

INDIA

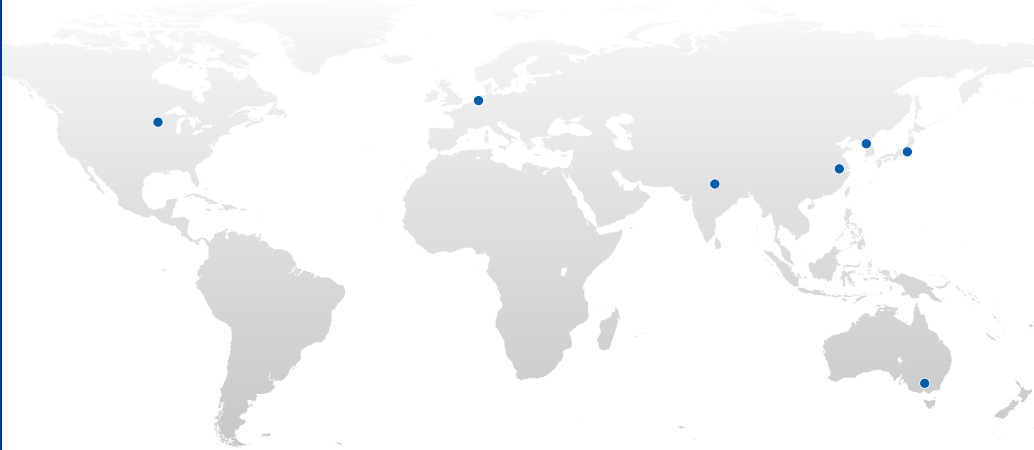
Graco India Private Limited
4th Floor
Augusta Point
Sector 53, Golf Course Road
Gurgaon, Haryana, India 122001
Tel: 91 124 435 4208 Fax: 91 124 435 4001

JAPAN

Graco K.K.
1-27-12 Hayabuchi
Tsuzuki-ku
Yokohama City, Japan 2240025
Tel: 81 45 593 7300 Fax: 81 45 593 7301

KOREA

Graco Korea Inc.
Shinhan Bank Building
4th Floor #1599
Gwanyang-Dong, Dongan-Ku,
Anyang-si, Korea 431-060
Tel: 82 31 476 9400 Fax: 82 31 476 9801



Graco Has You Covered

Facilities Worldwide for Global Support



Quality First

At Graco we pride ourselves on providing best-in-class products. Engineered solutions are manufactured in our own facilities, with the highest standards in the industry. We provide you with world-class customer support and expertise to help solve your application challenges.



Global Reach

Graco has facilities across the globe to provide you with the products and service you need, where you live. Plus, Graco has dedicated field experts in all areas of the world to support the products we sell.



Product Capabilities

Graco has a broad range of products that are engineered and tested to perform in the harshest environments so you can be certain your equipment is protected and working at peak performance.

Contact us today!

Call **866-361-5959** to talk with a Graco representative,
or visit www.graco.com for more information.

